



Websters
estate agents
020 8892 3343
mywebsters.co.uk
For Sale

Websters
estate agents

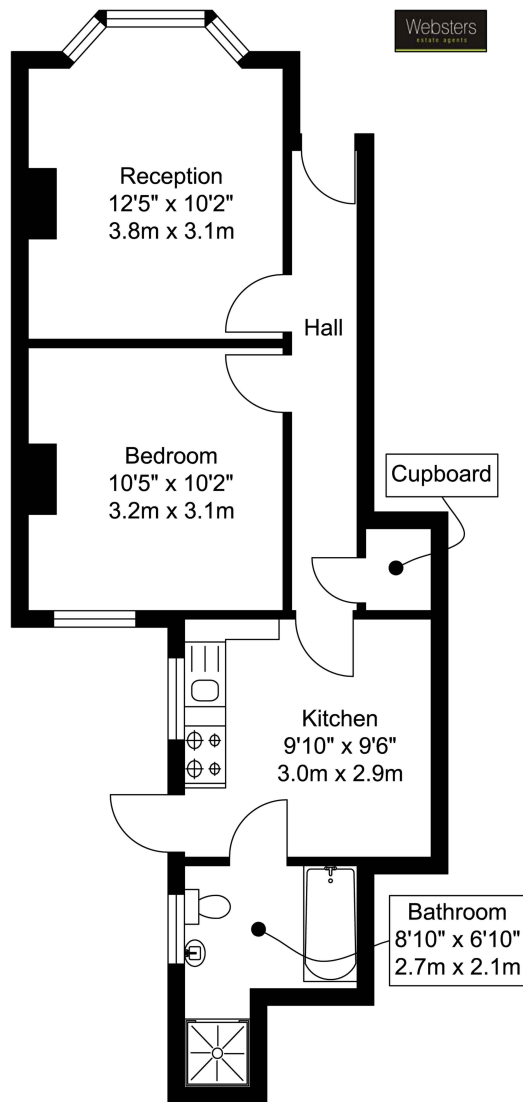
Elmsleigh Road, Twickenham, TW2 5EF

A lovely period ground floor, 1 bedroom maisonette with its own private front and rear gardens and share of freehold! This attractive property has a great deal of period character, modern kitchen & bathroom leading out onto a secluded mature rear garden.

Elmsleigh Road is situated at the end of a quiet residential cul de sac just 300 yards from Twickenham Green and local amenities. Strawberry Hill railway station is less than 0.5 miles away.

- One Bedroom
- Ground Floor
- Maisonette
- Private Front & Rear Gardens
- Period Property
- Cul-de-sac Location
- 300 Yards from Twickenham Green





Approximate Floor Area
409 sq. ft.
(38.0 sq. m)

Elmsleigh Road, Twickenham

Whilst every attempt has been made to ensure the accuracy of the floor plan contained herein, measurements of doors, windows, rooms and any other items are approximate and no responsibility is taken for any error, omission, or mis-statement. This plan is for illustrative purposes only and should be used as such by any prospective purchaser. The services, systems and appliances shown herein have not been tested and no guarantee as to their operability or efficiency can be given. www.viva280.net

a Websters Estate Agents 36 Broad Street, Teddington, Middlesex TW11 8QY

t 020 8614 6000

e sales@mywebsters.co.uk **w** mywebsters.co.uk

Disclaimer

These particulars, whilst believed to be accurate are set out as a general outline only for guidance and do not constitute any part of an offer or contract. Intending purchasers should not rely on them as statements of representation of fact, but must satisfy themselves by inspection or otherwise as to their accuracy. We have not carried out a detailed survey nor tested the services, appliances and specific fittings. Room sizes should not be relied upon for carpets and furnishings. The measurements given are approximate. No person in this firm's employment has the authority to make or give any representation or warranty in respect of the property.

