



Websters  
estate agents



# 27 Egerton Road, Twickenham, TW2 7SL

A deceptively spacious, tastefully presented 3 bedroom family home. In a popular residential road less than 0.5 mile from Twickenham Mainline Railway Station.

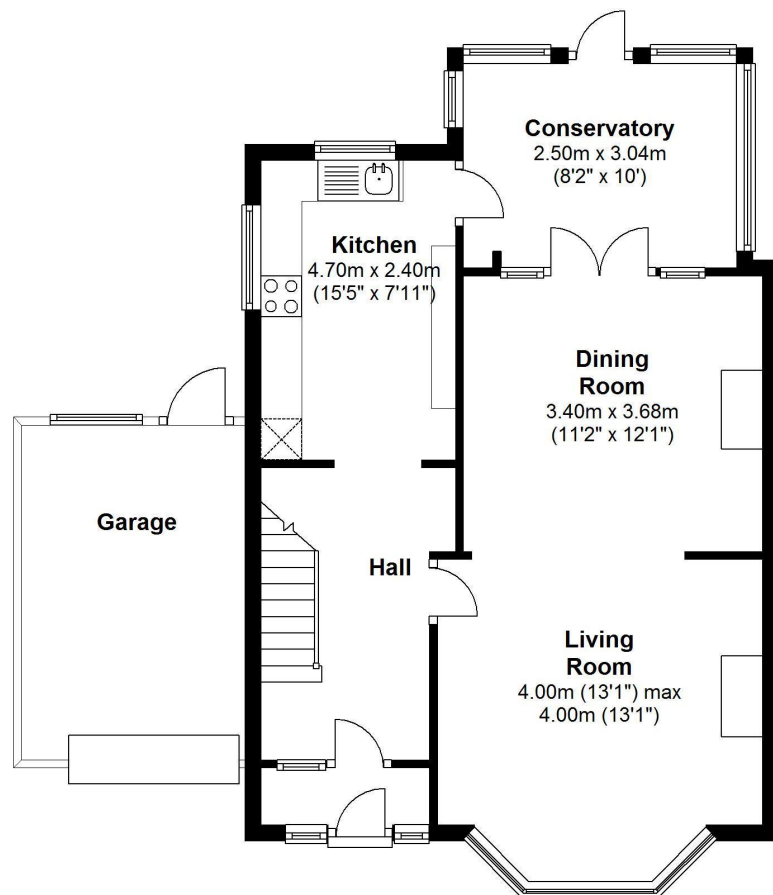
The reception room has a feature fire place and leads into a lovely conservatory. A modern fitted kitchen/breakfast room opens onto the westerly facing secluded rear garden with vehicular access. Driveway parking to the front and access to the garage. There are 3 generous bedrooms and a luxury shower room upstairs.

With potential to loft convert and construct a large two storey side extension, the property offers huge potential, subject to the usual Planning Consents.

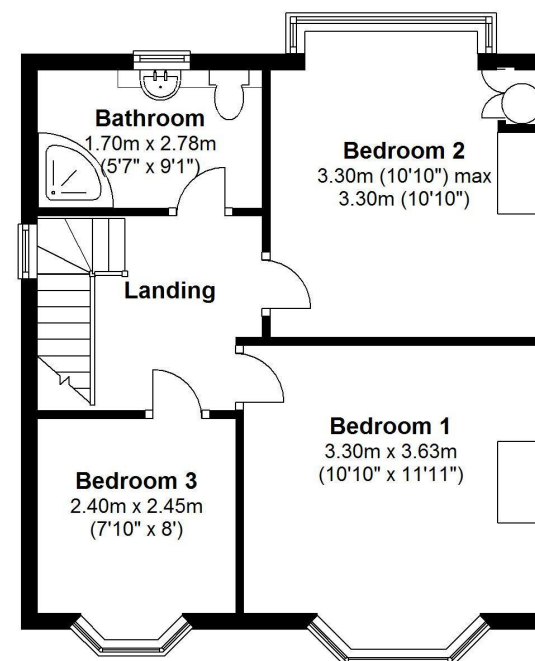
- Family Home
- 3 Generous Sized Bedrooms
- Modern Kitchen
- Westerly Facing Secluded Garden
- Conservatory
- Twickenham Mainline Station Less than 0.5miles
- Potential to Extend (subject to planning)
- Driveway & Garage



**Ground Floor Approx.59.25 sq.metres (637.63 sq.feet)**



**First Floor Approx.43.3 sq.metres (467.5 sq.feet)**



**a** Websters Estate Agents 36 Broad Street, Teddington, Middlesex TW11 8QY

**t** 020 8614 6000

**e** sales@mywebsters.co.uk **w** mywebsters.co.uk

**Disclaimer**

These particulars, whilst believed to be accurate are set out as a general outline only for guidance and do not constitute any part of an offer or contract. Intending purchasers should not rely on them as statements of representation of fact, but must satisfy themselves by inspection or otherwise as to their accuracy. We have not carried out a detailed survey nor tested the services, appliances and specific fittings. Room sizes should not be relied upon for carpets and furnishings. The measurements given are approximate. No person in this firm's employment has the authority to make or give any representation or warranty in respect of the property.



