



Websters  
estate agents



# 49 Oldfield Road, Hampton, TW12 2AJ

Charming Victorian semi-detached house with bay front and sash windows, in a popular Hampton Village location just 100 yards from Waitrose and the railway station.

Desirable, well presented 4 bedroom family home with 1539 sq ft of balanced accommodation arranged over 3 floors.

Entrance hallway leads into the spacious through lounge/dining room with wooden floors, feature fireplaces, wood burning stove and double doors onto the garden. The modern kitchen/family room at the rear is bright and welcoming and also opens onto the garden.

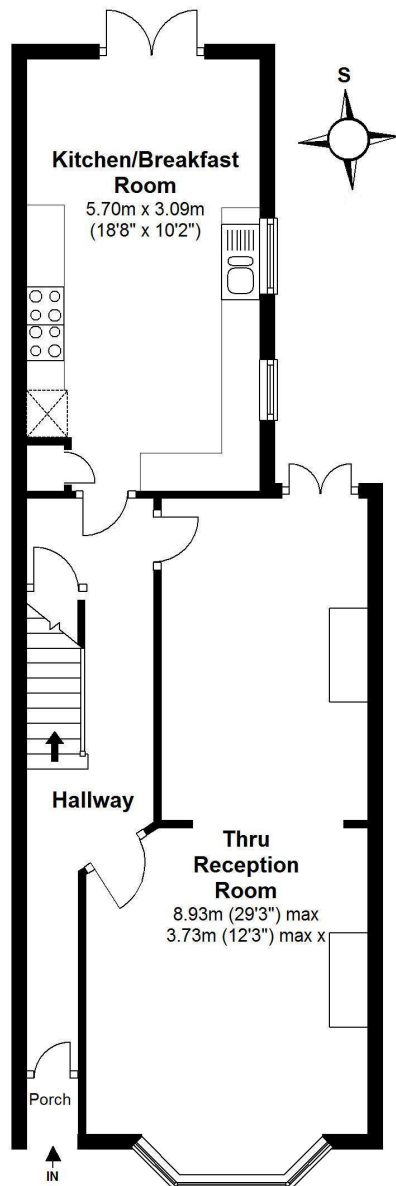
The pretty south facing, L-shaped garden has an extensive patio, lawns, beautiful mature planting, storage shed and side access.

Upstairs are 4 bedrooms, the family bathroom and an en suite bathroom.

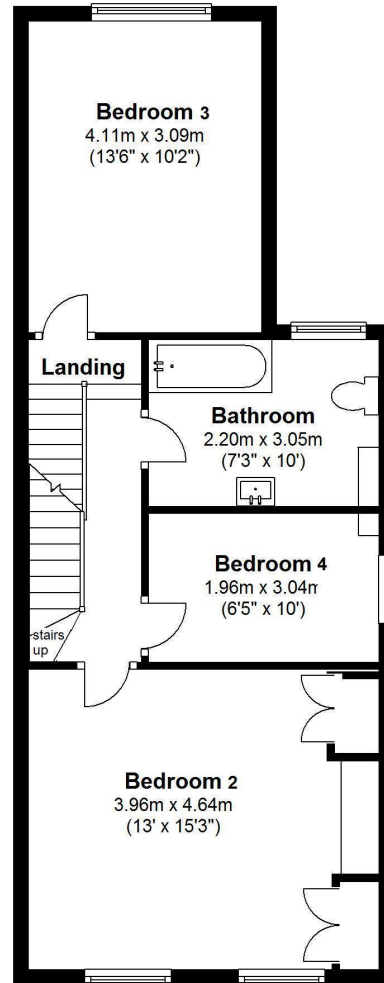
EPC Rating D

- Victorian Bay Fronted Home
- 1539 Sq Ft Accommodation
- 4 Bedrooms
- 2 Modern Bathrooms
- Through Lounge/Dining Room
- Kitchen/Family Room
- South Facing Garden
- Hampton Railway Station 100 Yards

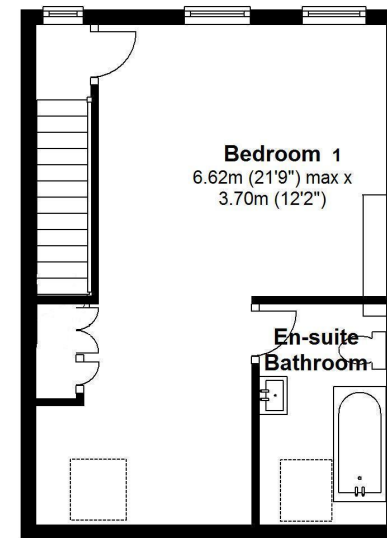




Floor area approx. = 644 Sq.Feet (59.80 sq.metres)



Floor area approx. = 568 Sq.Feet (52.76sq.metres)



Floor area approx. = 327 Sq.Feet (30.36 sq.metres)

Gross Floor area approx. = 1,539 Sq.Feet (143 sq.metres)

**a** Websters Estate Agents 36 Broad Street, Teddington, Middlesex TW11 8QY

**t** 020 8614 6000

**e** sales@mywebsters.co.uk **w** mywebsters.co.uk

**Disclaimer**

These particulars, whilst believed to be accurate are set out as a general outline only for guidance and do not constitute any part of an offer or contract. Intending purchasers should not rely on them as statements of representation of fact, but must satisfy themselves by inspection or otherwise as to their accuracy. We have not carried out a detailed survey nor tested the services, appliances and specific fittings. Room sizes should not be relied upon for carpets and furnishings. The measurements given are approximate. No person in this firm's employment has the authority to make or give any representation or warranty in respect of the property.



