



Websters
estate agents

Craneford Way, Twickenham, TW2 7SQ

First floor purpose built maisonette with a private garden. In a popular quiet location overlooking open playing fields and only 0.5 miles from Twickenham mainline train station. In excellent decorative order throughout with a light and welcoming feel, this pleasing property offers 710sq ft of adaptable living space.

Ground floor front entrance leads up to the hallway with doors to the 2 double bedrooms with storage, bay fronted living room, luxury family bathroom, fully fitted kitchen with a door to the external staircase which leads to the private garden.

Located 0.6 miles from Twickenham town centre and only 1 mile from Marble Hill Park and the River Thames.

EPC Rating D

- First Floor Purpose Built Maisonette
- 710 Sq Ft of Living Space
- Well Presented Throughout
- Spacious Living Room
- Separate Fitted Kitchen
- Luxury Family Bathroom
- 2 Double Bedrooms
- Private Rear Garden
- 0.5 Miles from Twickenham Mainline Station

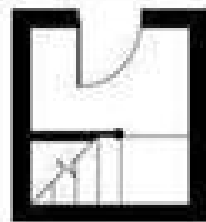


Craneford Way



First Floor Two Bedroom Maisonette

GROUND FLOOR



External
stairs down
to Garden



Gross Floor area approx.=706 Sq.Feet (65.6sq.metres)

a Websters Estate Agents 36 Broad Street, Teddington, Middlesex TW11 8QY

t 020 8614 6000

e sales@mywebsters.co.uk **w** mywebsters.co.uk

Disclaimer

These particulars, whilst believed to be accurate are set out as a general outline only for guidance and do not constitute any part of an offer or contract. Intending purchasers should not rely on them as statements of representation of fact, but must satisfy themselves by inspection or otherwise as to their accuracy. We have not carried out a detailed survey nor tested the services, appliances and specific fittings. Room sizes should not be relied upon for carpets and furnishings. The measurements given are approximate. No person in this firm's employment has the authority to make or give any representation or warranty in respect of the property.

