



Websters  
estate agents

# 14 Warwick Road, Twickenham, TW2 6SW

Attractive mid terrace Victorian cottage on a popular residential road only 200 metres from Twickenham Green, local shops and restaurants.

Immaculately presented throughout with a light and airy feel and pleasant neutral décor, this lovely property has been extended on the ground floor and offers 823 sq ft of living space.

Entrance hallway leads into the rear living room with an archway into the front living room and a doorway into the spacious modern fully fitted extended kitchen/breakfast room. Door to the side opens onto the courtyard garden.

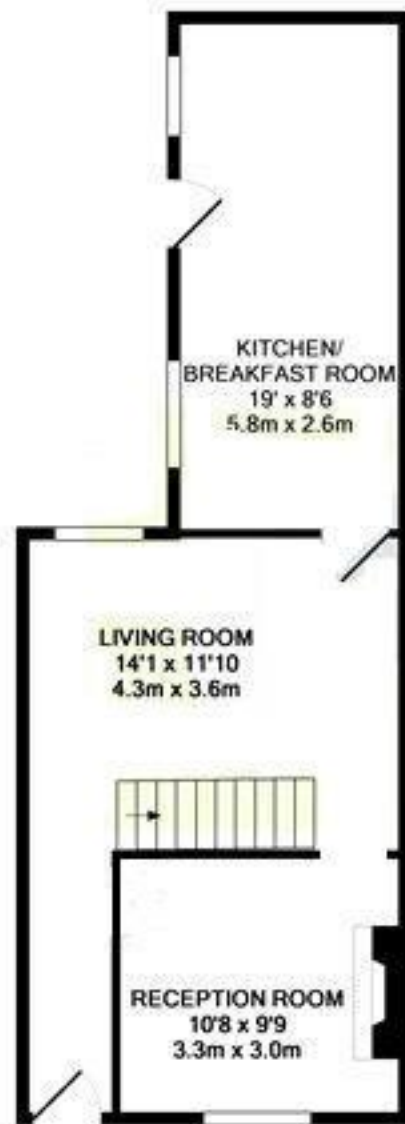
Upstairs are 2 double bedrooms with storage and the family bathroom.

With unrestricted parking on the road and only 0.6 miles from Twickenham Mainline and Strawberry Hill train stations.

EPC Rating D

- Mid Terrace Victorian Cottage
- Well Presented Throughout
- 2 Reception Rooms
- Extended Kitchen/Breakfast Room
- 2 Double Bedrooms
- Upstairs Family Bathroom
- Patio Courtyard
- 0.6 Miles from Twickenham Mainline Train Station





GROUND FLOOR  
APPROX. FLOOR  
AREA 43.4 SQ.M.  
(467 SQ.FT.)



**BEDROOM**  
14'1" x 9'10"  
4.3m x 3.0m

1ST FLOOR  
APPROX. FLOOR  
AREA 33.1 SQ.M.  
(356 SQ.FT.)  
TOTAL APPROX. FLOOR AREA 76.5 SQ.M. (823 SQ.FT.)  
Made with Metropix ©2009

**a** Websters Estate Agents 36 Broad Street, Teddington, Middlesex TW11 8QY

**t** 020 8614 6000

**e** sales@mywebsters.co.uk **w** mywebsters.co.uk

**Disclaimer**

These particulars, whilst believed to be accurate are set out as a general outline only for guidance and do not constitute any part of an offer or contract. Intending purchasers should not rely on them as statements of representation of fact, but must satisfy themselves by inspection or otherwise as to their accuracy. We have not carried out a detailed survey nor tested the services, appliances and specific fittings. Room sizes should not be relied upon for carpets and furnishings. The measurements given are approximate. No person in this firm's employment has the authority to make or give any representation or warranty in respect of the property.

