



Websters
ESTATE AGENTS
020 8888 2000
WWW.WEBSTERS.CO.UK

8

6

Websters
estate agents

6 Lion Road,TWICKENHAM,TW1 4JQ

Attractive Victorian mid terrace cottage in a popular Twickenham location. Tasteful presented with neutral décor, high ceilings and period features throughout, this home offers bright modern family living space.

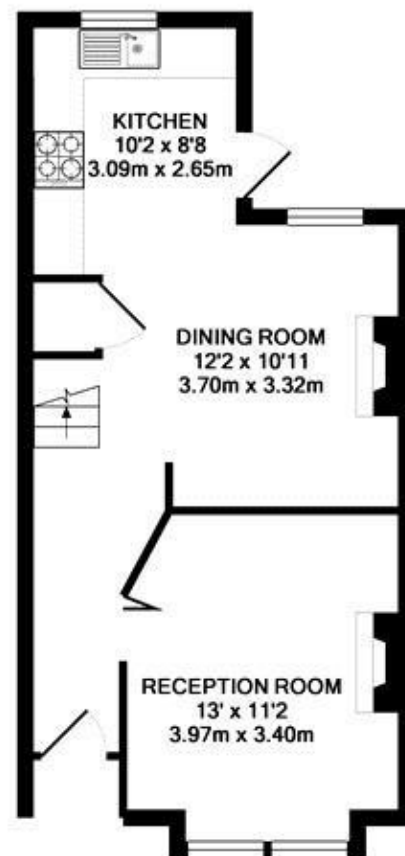
Entrance hallway leads to the 2 separate reception rooms, storage and the modern newly fitted kitchen at the rear. The pretty lawned courtyard garden is accessed from the kitchen. Upstairs are 2 double bedrooms and the stunning luxury bathroom.

Potential to loft convert and add a third bedroom, subject to planning permission and building regulations.

Located only 0.6 miles from Twickenham mainline train station and just 0.2 miles from Twickenham Green and local shops. EPC Rating E.

- Victorian Mid Terrace Cottage
- Superbly Presented Throughout
- 2 Reception Rooms
- Newly Fitted Kitchen
- 2 Double Bedrooms
- Upstairs Luxury Bathroom
- Potential to Loft Convert (stpp)
- Twickenham Mainline Station 0.6 Miles





GROUND FLOOR
APPROX. FLOOR
AREA 429 SQ.FT.
(39.8 SQ.M.)



1ST FLOOR
APPROX. FLOOR
AREA 407 SQ.FT.
(37.8 SQ.M.)

LION ROAD, TWICKENHAM, TW1 4JQ
TOTAL APPROX. FLOOR AREA 835 SQ.FT. (77.6 SQ.M.)

a Websters Estate Agents 36 Broad Street, Teddington, Middlesex TW11 8QY

t 020 8614 6000

e sales@mywebsters.co.uk **w** mywebsters.co.uk

Disclaimer

These particulars, whilst believed to be accurate are set out as a general outline only for guidance and do not constitute any part of an offer or contract. Intending purchasers should not rely on them as statements of representation of fact, but must satisfy themselves by inspection or otherwise as to their accuracy. We have not carried out a detailed survey nor tested the services, appliances and specific fittings. Room sizes should not be relied upon for carpets and furnishings. The measurements given are approximate. No person in this firm's employment has the authority to make or give any representation or warranty in respect of the property.

