



Websters  
estate agents

# , Twickenham, TW2 6NT

Viewings from Saturday 9th August.

Attractive 3 bedroom, mid terrace town house in a highly regarded cul-de-sac location 200 metres from Kneller Gardens and the River Crane.

Arranged over 3 floors with spacious and adaptable living space offering 1169 sq ft.

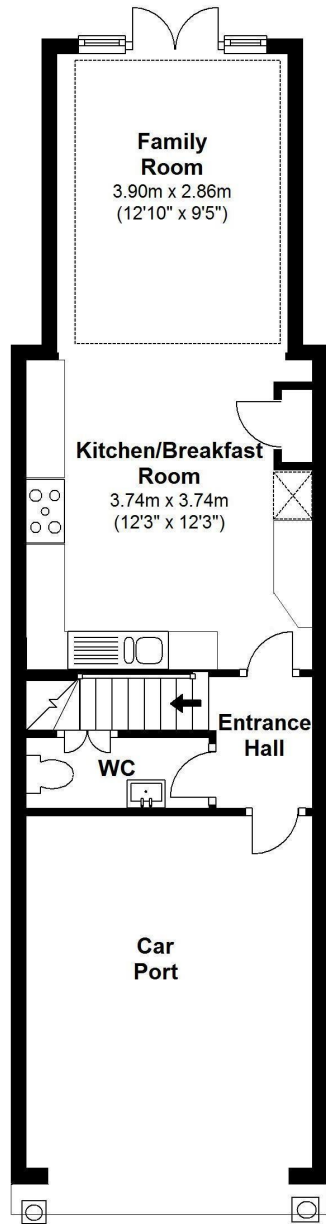
Covered front door into entrance hallway with w.c and the bright and spacious kitchen/dining/family room. Doors open directly onto the rear south west facing garden.

On the first floor is a spacious living room and a double bedroom. The master bedroom with newly fitted en-suite shower facilities, bedroom and family bathroom are on the second floor.

Located a 400 metre walk from Whitton mainline train station and less than 1 mile from Twickenham station and town centre. EPC Rating C

- Modern Style Town House
- Excellent Order Throughout
- Open Plan Kitchen/Dining/Family Room
- Conservatory at Rear
- 3 Double Bedrooms
- Family Bathroom and En Suite Shower Room
- South West Facing Garden
- Driveway and Undercroft Parking

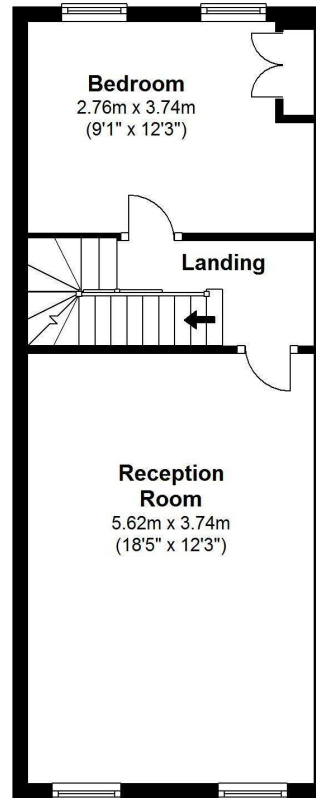




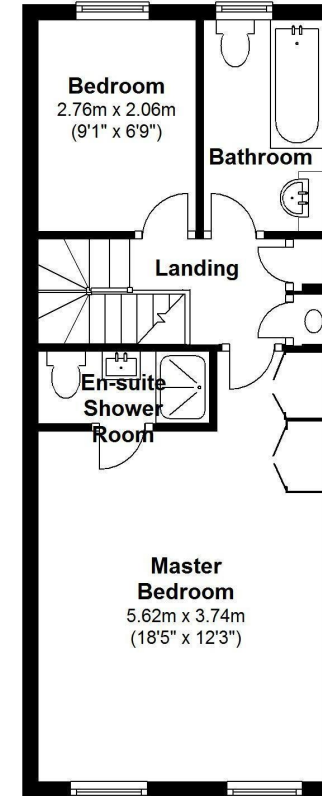
**Ground Floor**



Park Crescent



**First Floor**



**Second Floor**

Gross Floor Area approx. = 1,169 Sq. Feet (108.60 sq. metres)

Copyright epc@epcertificate.com

**a** Websters Estate Agents 36 Broad Street, Teddington, Middlesex TW11 8QY

**t** 020 8614 6000

**e** sales@mywebsters.co.uk **w** mywebsters.co.uk

**Disclaimer**

These particulars, whilst believed to be accurate are set out as a general outline only for guidance and do not constitute any part of an offer or contract. Intending purchasers should not rely on them as statements of representation of fact, but must satisfy themselves by inspection or otherwise as to their accuracy. We have not carried out a detailed survey nor tested the services, appliances and specific fittings. Room sizes should not be relied upon for carpets and furnishings. The measurements given are approximate. No person in this firm's employment has the authority to make or give any representation or warranty in respect of the property.

