



Websters
estate agents
020 8892 3343
mywebsters.co.uk
For Sale

132

130

128

Websters
estate agents

132 Craneford Way, Twickenham, TW2 7SQ

Ground floor purpose built, 2 bedroom maisonette with a private garden. Situated in a popular quiet location overlooking open playing fields and only 0.5 miles from Twickenham mainline train station.

This desirable and well kept property has pleasant light neutral décor throughout and offers 704 sq ft of adaptable living space.

Front door opens into the hallway with doors leading to the 2 double bedrooms, spacious bay fronted living room, the family bathroom and the modern fitted kitchen. The pretty lawned garden has mature planting and a storage shed and is accessed from the bedroom, the kitchen and the side/ front of the property.

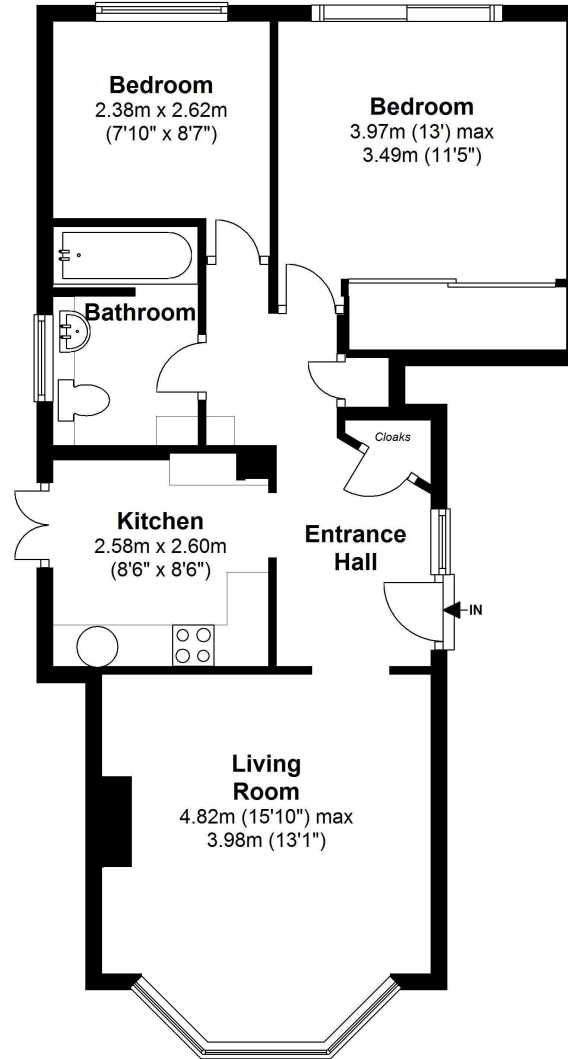
Located 0.6 miles from Twickenham town centre and only 1 mile from Marble Hill Park and the River Thames.

EPC Rating 64

- Ground Floor Purpose Built Maisonette
- Private Rear Garden with Side Access
- Well Presented Throughout
- Bay Fronted Living Room
- Separate Fitted Kitchen
- 2 Double Bedrooms
- Family Bathroom
- 0.5 Miles from Twickenham Mainline Station



Craneford Way



Two Bedroom Maisonette

Gross Floor area approx. = 704 Sq.Feet (65.40 sq.metres)

a Websters Estate Agents 36 Broad Street, Teddington, Middlesex TW11 8QY

t 020 8614 6000

e sales@mywebsters.co.uk w mywebsters.co.uk

Disclaimer

These particulars, whilst believed to be accurate are set out as a general outline only for guidance and do not constitute any part of an offer or contract. Intending purchasers should not rely on them as statements of representation of fact, but must satisfy themselves by inspection or otherwise as to their accuracy. We have not carried out a detailed survey nor tested the services, appliances and specific fittings. Room sizes should not be relied upon for carpets and furnishings. The measurements given are approximate. No person in this firm's employment has the authority to make or give any representation or warranty in respect of the property.

