



OLIVER
COURT

Websters
estate agents

,Feltham,TW13 6SY

Investment opportunity with an expected rental yield in the region of 5.8%.

Superb first floor, luxury 2 bedroom apartment in a fully maintained attractive new development of 9 apartments, completed January 2013.

Well planned 775 sq ft of bright and spacious contemporary living space with high specification fixtures and fittings throughout and access to lawned communal gardens at the rear and an allocated residents parking space at the front of the property.

Entrance hallway leads to the living room with a private balcony, utility cupboard, separate kitchen, luxury bathroom and 2 double bedrooms one with en-suite shower room.

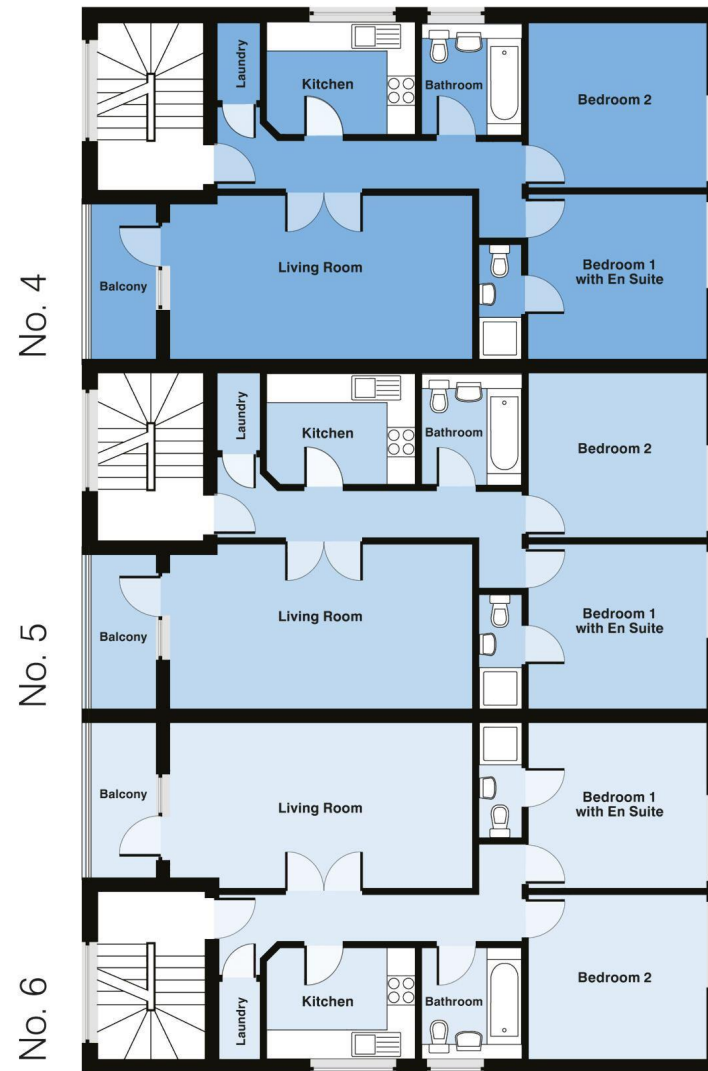
Access is from the front of the property via a secure communal entrance (serving only 3 apartments) with an entry phone system.

EPC Rating B

- Luxury Apartment in New Development
- Spacious Living Room with Balcony
- Separate Kitchen1
- Luxury Bathroom and En-Suite
- 2 Double Bedrooms
- Communal Gardens
- Entry Phone System
- Allocated Residents Parking



First Floor



a Websters Estate Agents 36 Broad Street, Teddington, Middlesex TW11 8QY

t 020 8614 6000

e sales@mywebsters.co.uk **w** mywebsters.co.uk

Disclaimer

These particulars, whilst believed to be accurate are set out as a general outline only for guidance and do not constitute any part of an offer or contract. Intending purchasers should not rely on them as statements of representation of fact, but must satisfy themselves by inspection or otherwise as to their accuracy. We have not carried out a detailed survey nor tested the services, appliances and specific fittings. Room sizes should not be relied upon for carpets and furnishings. The measurements given are approximate. No person in this firm's employment has the authority to make or give any representation or warranty in respect of the property.

