



MA56 BYT

149

Websters
estate agents

49 Warwick Road, Twickenham, TW2 6SW

End of Terrace Victorian Cottage on a popular quiet residential road just 0.3 miles from Twickenham Green, local shops, bars and restaurants forming part of the local conservation area.

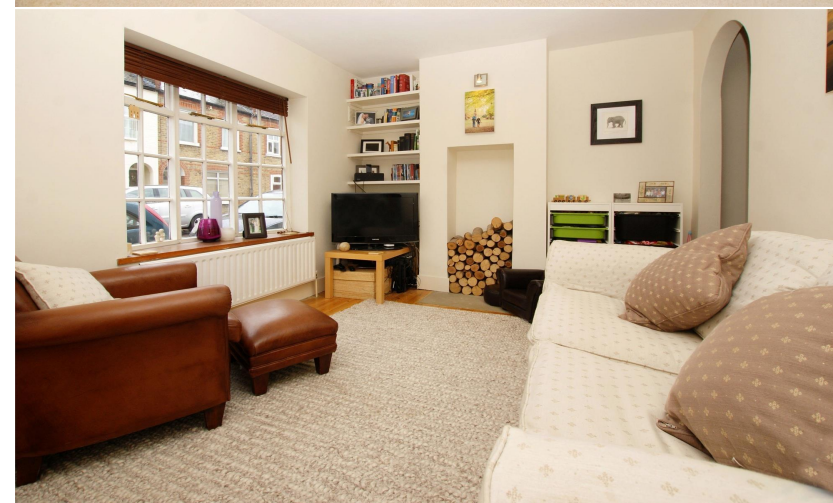
Beautifully presented period property with a light welcoming feel and pleasant neutral décor offering potential to extend at the rear and loft convert (subject to planning permission and building regulations)

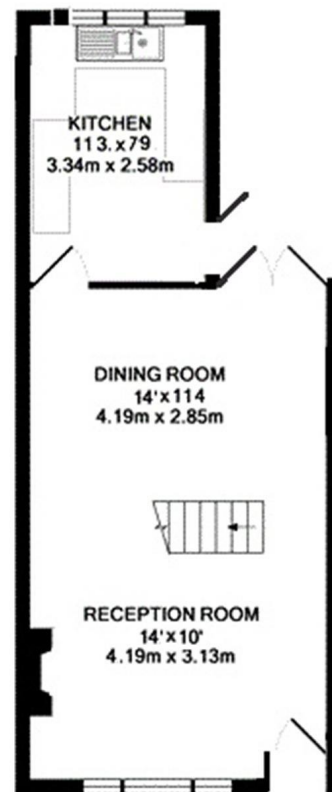
Front door leads into the living room at the front with access into dining room and the modern fully fitted kitchen. Doors open onto the pretty courtyard garden with shed storage and side access.

Upstairs are 2 double bedrooms and the family bathroom.

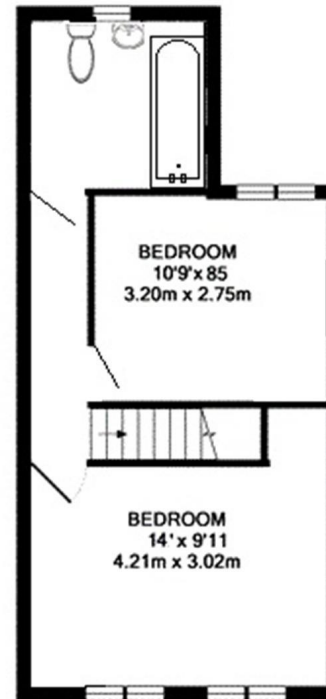
Located in an unrestricted parking area only 0.7 miles from Strawberry Hill Station, Twickenham mainline station and the town centre. EPC Rating E.

- End of Terrace Victorian Cottage
- Twickenham Green Location
- 2 Reception Rooms
- Fitted Kitchen
- 2 Double Bedrooms
- Upstairs Bathroom
- Courtyard Garden with Rear Access
- 0.7 Miles from Twickenham Mainline Station





GROUND FLOOR
APPROX. FLOOR
AREA 411 SQ.FT.
(38.2 SQ.M.)



1ST FLOOR
APPROX. FLOOR
AREA 372 SQ.FT.
(34.5 SQ.M.)

WARWICK ROAD, TWICKENHAM, TW2 6SW
TOTAL APPROX. FLOOR AREA 783 SQ.FT. (72.7 SQ.M.)



Disclaimer

These particulars, whilst believed to be accurate are set out as a general outline only for guidance and do not constitute any part of an offer or contract. Intending purchasers should not rely on them as statements of representation of fact, but must satisfy themselves by inspection or otherwise as to their accuracy. We have not carried out a detailed survey nor tested the services, appliances and specific fittings. Room sizes should not be relied upon for carpets and furnishings. The measurements given are approximate. No person in this firm's employment has the authority to make or give any representation or warranty in respect of the property.

