



Websters
estate agents

103 Haliburton Road, Twickenham, TW1 1PE

Attractive mid terrace, bay fronted Victorian house on a popular residential road with a pretty garden backing onto the River Crane.

In need of modernisation throughout and currently offering 1016sq ft of adaptable living space over 2 floors. This lovely home has potential to extend and loft convert (subject to Planning Permission and building regulations) and create a stunning bespoke 4 bedroom family home.

Entrance hallway leads to the dual aspect open plan living/dining room and the separate kitchen. A door leads into a w.c, utility area and the family room at the rear of the property. Doors open directly onto the pretty west facing paved garden with shrubs, mature planting and views over the River Crane.

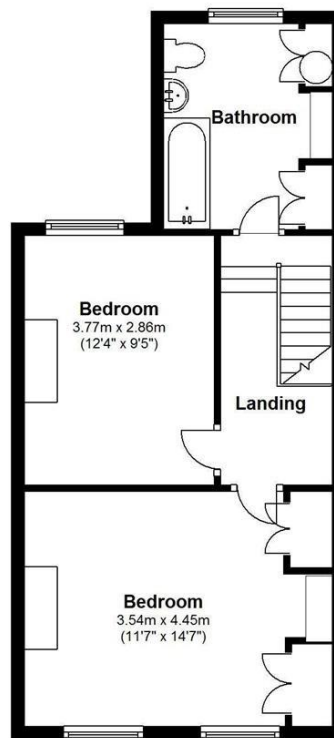
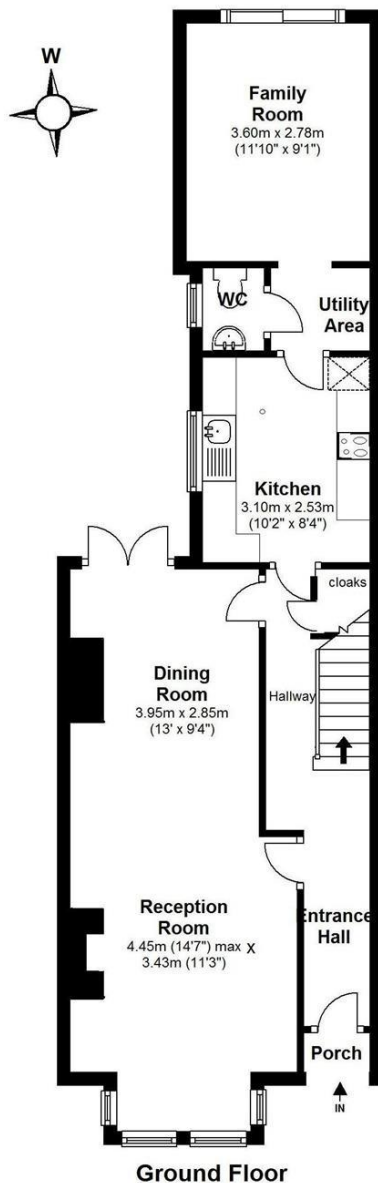
Upstairs are 2 double bedrooms and the family bathroom.

Located only 0.6 miles from St Margarets train station, village shopping area and Richmond Old Deer Park. EPC Rating D

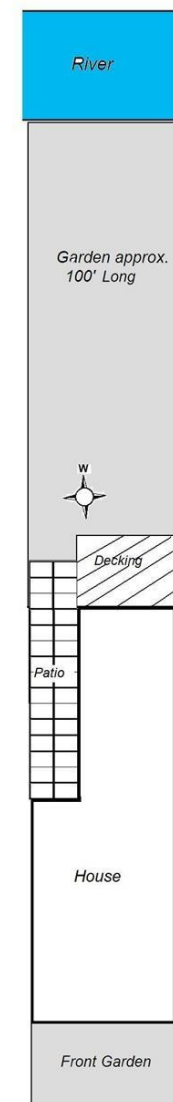
- Riverside Mid Terrace Victorian House
- In Need of Modernisation
- Potential to Extend and Loft Convert (stpp)
- Open Plan Living/Dining Room
- Kitchen, W.C, Utility Area and Family Room
- 2 Double Bedrooms and Upstairs Family Bathroom
- West Facing 100ft Garden onto River Crane
- 0.6 Miles from St Margarets Station and Village



Haliburton Road



First Floor



Gross Floor Area approx.= 1,061 Sq.Feet (98.60 sq.metres)

Copyright epc@epcertificate.com

a Websters Estate Agents 36 Broad Street, Teddington, Middlesex TW11 8QY

t 020 8614 6000

e sales@mywebsters.co.uk w mywebsters.co.uk

Disclaimer

These particulars, whilst believed to be accurate are set out as a general outline only for guidance and do not constitute any part of an offer or contract. Intending purchasers should not rely on them as statements of representation of fact, but must satisfy themselves by inspection or otherwise as to their accuracy. We have not carried out a detailed survey nor tested the services, appliances and specific fittings. Room sizes should not be relied upon for carpets and furnishings. The measurements given are approximate. No person in this firm's employment has the authority to make or give any representation or warranty in respect of the property.

