



Websters
estate agents

Staines Road, Twickenham, TW2 5BE

First floor 2 bedroom maisonette with a private rear garden.

With vacant possession and no onward chain, this desirable leasehold property is in an attractive bay fronted end of terrace property just 0.2 miles from Twickenham Green, local shops and restaurants.

Well presented throughout with original wood flooring, sash windows and high ceilings, this charming flat offers 673 sq ft of adaptable living space.

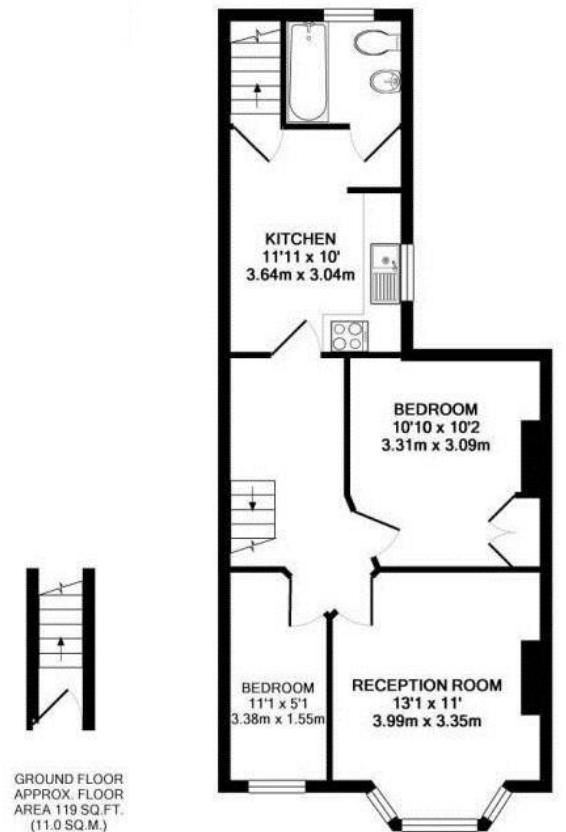
Front door leads upstairs to the spacious hallway with doors to the bay fronted living room, 2 bedrooms and the kitchen at the rear. Doorways in the kitchen lead to the bathroom and downstairs to the pretty secluded south facing garden.

Situated 0.6 miles from Strawberry Hill Station and only 1 mile from Twickenham Mainline train station and town centre.

EPC Rating D

- First Floor Purpose Built Maisonette
- Private South Facing Garden
- Vacant Possession - No Chain
- Bay Fronted Living Room
- 2 Bedrooms
- Separate Kitchen and Bathroom
- 0.6 Miles from Strawberry Hill Station





1ST FLOOR
APPROX. FLOOR
AREA 555 SQ.FT.
(51.5 SQ.M.)

STAINES ROAD TWICKENHAM TW2
TOTAL APPROX. FLOOR AREA 673 SQ.FT. (62.5 SQ.M.)

All measurements taken to RICS Guidelines for Gross Internal Area. Whilst every attempt has been made to ensure the accuracy of the floor plan contained here, all measurements are approximate and no responsibility is taken for any error, omission or misstatement. This plan is for illustrative purposes only and should be used as such by any prospective purchaser. The services, systems and appliances shown have not been tested and no guarantee as to their operability or efficiency can be given.
Made with Metropix ©2012

a Websters Estate Agents 36 Broad Street, Teddington, Middlesex TW11 8QY

t 020 8614 6000

e sales@mywebsters.co.uk **w** mywebsters.co.uk

Disclaimer

These particulars, whilst believed to be accurate are set out as a general outline only for guidance and do not constitute any part of an offer or contract. Intending purchasers should not rely on them as statements of representation of fact, but must satisfy themselves by inspection or otherwise as to their accuracy. We have not carried out a detailed survey nor tested the services, appliances and specific fittings. Room sizes should not be relied upon for carpets and furnishings. The measurements given are approximate. No person in this firm's employment has the authority to make or give any representation or warranty in respect of the property.

