



Websters  
estate agents



# Albion Road, Twickenham, TW2 6QJ

Terraced modern build period style 3 bedroom home with a courtyard garden with access to a private off street parking space at the rear. Situated less than 100 metres from Twickenham Green, local shops, bars and restaurants.

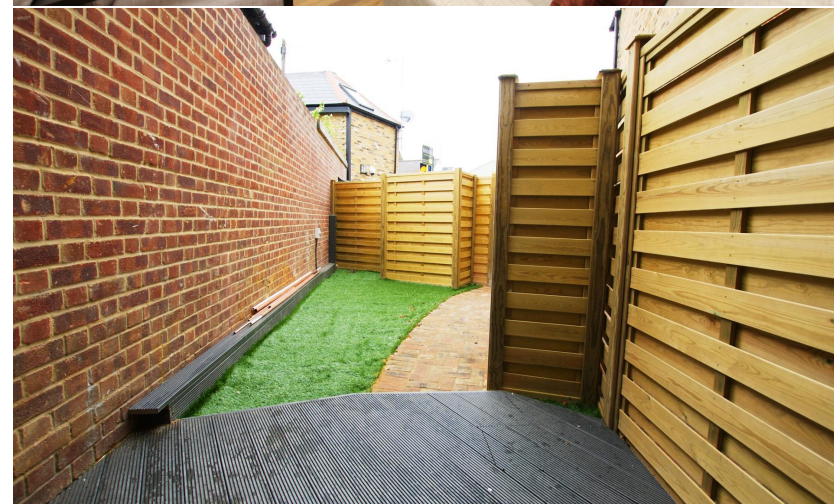
Investment Buyers Only with tenant in situ until end August 2021

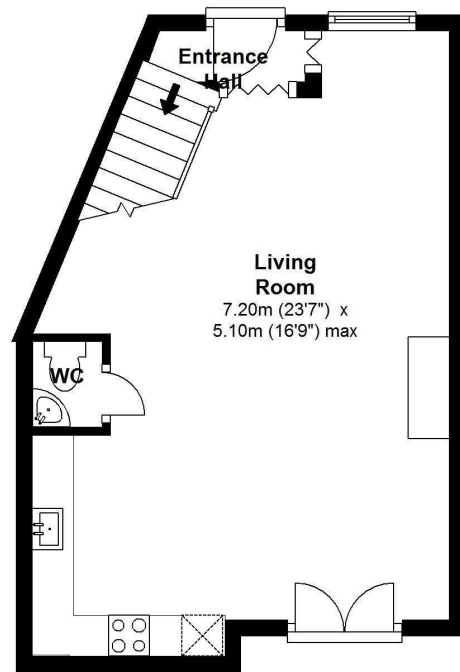
Tastefully presented to offer 1022 sq ft of living space over 3 floors with high specification fixtures, fittings and floorings, energy efficient heating and electrics, double glazed windows and doors and neutral decor throughout.

Entrance lobby leads to the open plan living/dining room with a stylish integrated kitchen. Doors open onto the garden with gated rear access to the parking space. On the first floor are 2 bedrooms and the luxury bathroom with stairs to the master bedroom suite with built in wardrobes and a shower room.

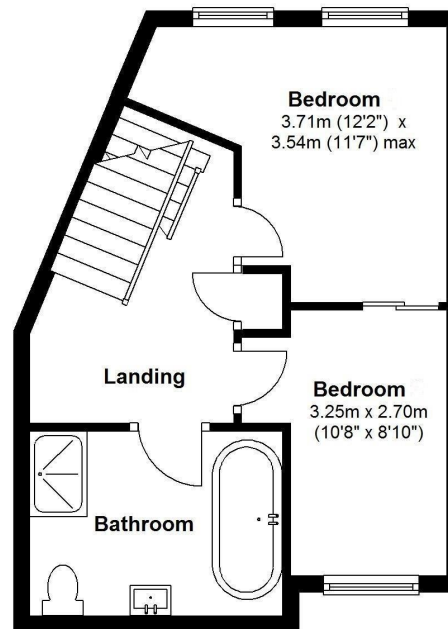
Located 0.2 miles from Archdeacon Primary and less than 0.5 miles from Trafalgar Primary and Sir Richard Reynolds Primary/Secondary Schools, 0.6 miles from Strawberry Hill Station and Twickenham town centre and just 0.8 miles from Twickenham mainline station.  
EPC Rating C

- Modern Build Family Home
- 3 Bedrooms and 2 Bathrooms
- Investment Buyer Only
- Tenanted Until August 2021
- Open Plan Downstairs Living Space
- Private Off Street Parking Space
- 100 Metres from Twickenham Green
- Close to Numerous Popular Schools

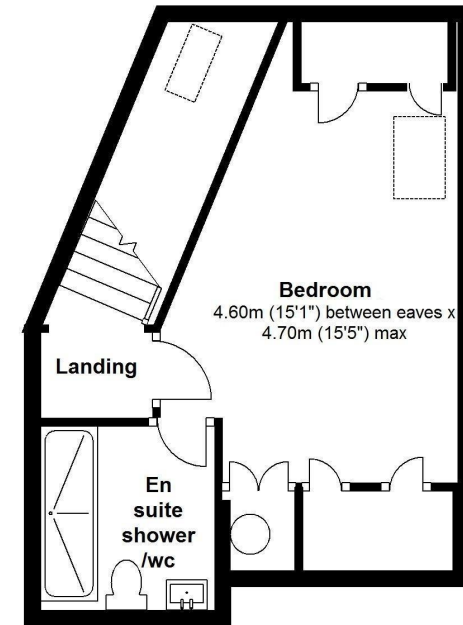




**Ground Floor**



**First Floor**



**Second Floor**

*Approx. area 270 Sq. Feet (25.07 sq. metres)*

***TOTAL Floor area approx. 1,022 Sq ft 95,02 Sq m***

**a** Websters Estate Agents 36 Broad Street, Teddington, Middlesex TW11 8QY

**t** 020 8614 6000

**e** sales@mywebsters.co.uk **w** mywebsters.co.uk

**Disclaimer**

These particulars, whilst believed to be accurate are set out as a general outline only for guidance and do not constitute any part of an offer or contract. Intending purchasers should not rely on them as statements of representation of fact, but must satisfy themselves by inspection or otherwise as to their accuracy. We have not carried out a detailed survey nor tested the services, appliances and specific fittings. Room sizes should not be relied upon for carpets and furnishings. The measurements given are approximate. No person in this firm's employment has the authority to make or give any representation or warranty in respect of the property.



